

TALES OF THE POST-PLANTATION

Seminar at Northwest A&F University

6 September 2018

Robin Thiers (UGent, Belgium)

robin.thiers@ugent.be



Philippine banana plantations



Free market bananas



Fungal destruction

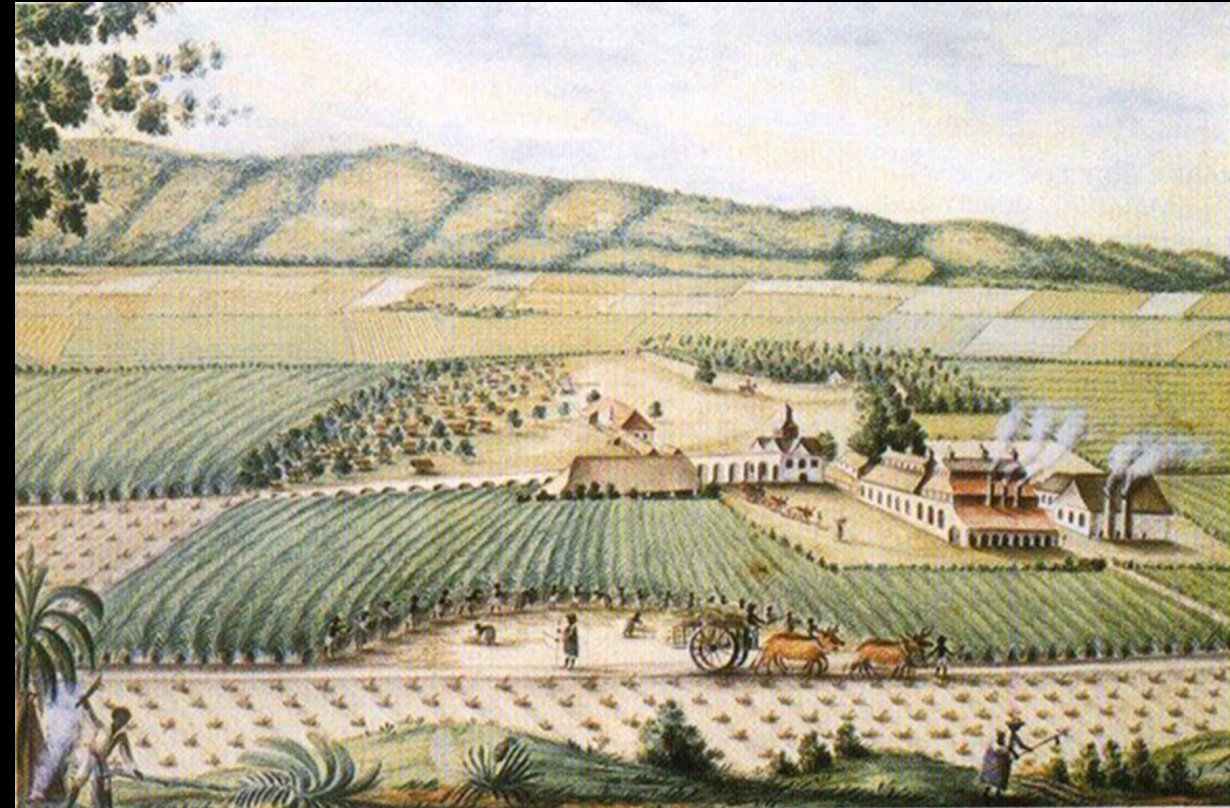
PLANTATION MODERNITY

The colonial plantation

“modern before the modern”

- Caribbean sugar
- Farm & factory
- Time-conscious
- Labour specialization and discipline

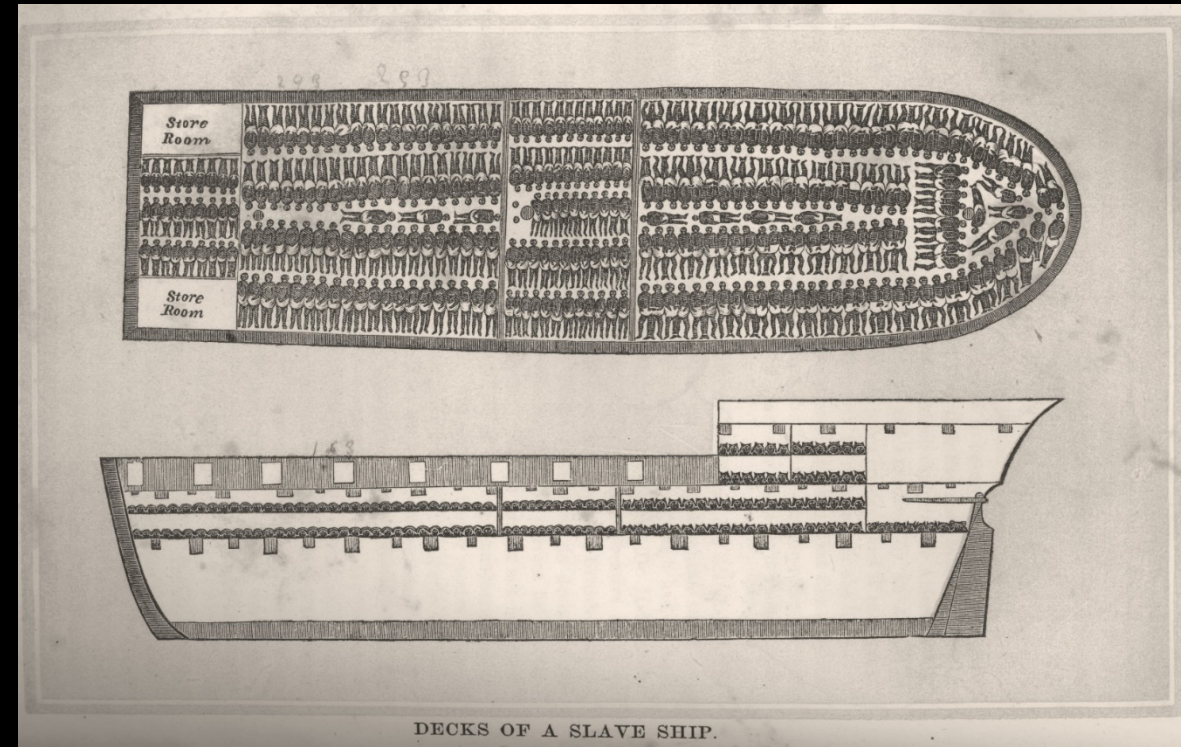
(Mintz 1985)



The colonial plantation

Who was to do the labour?

- interchangeable units of homogeneous labour
 - “abstract labour”
- alienated from the human being



The colonial plantation

What about the land?

- clear the land
- draw lines
- bring in the cash crop
- From complex ecosystem to units of production
 - “abstract nature”



Alienation

Tsing (2015)

- torn from entanglements of being
- land, labour, crop
- formula replicable & scaleable



Land investment boom today

Alienation... ?

- old and new entanglements
- refusing assigned roles (*dissidence*—Callon 1986)
- interferes with project of plantation modernity



Slaves ran away, revolted, slacked on the job

Alienation... ?

- old and new entanglements
- refusing assigned roles (*dissidence*—Callon 1986)
- interferes with project of plantation modernity

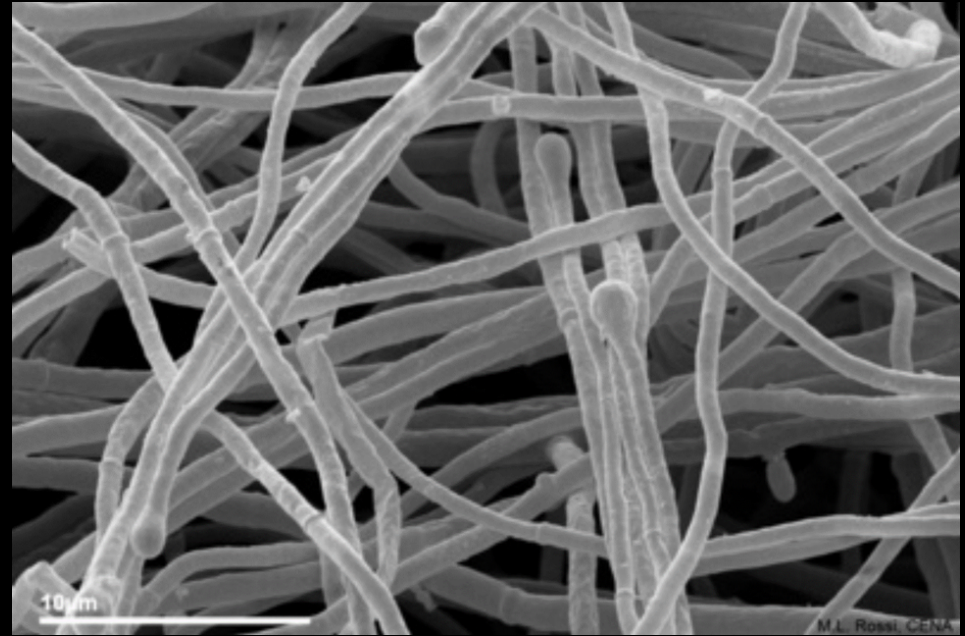


Pests and diseases

TALES OF UNLIKELY PROTAGONISTS



flying bananas



killer fungus

How bananas learnt to fly



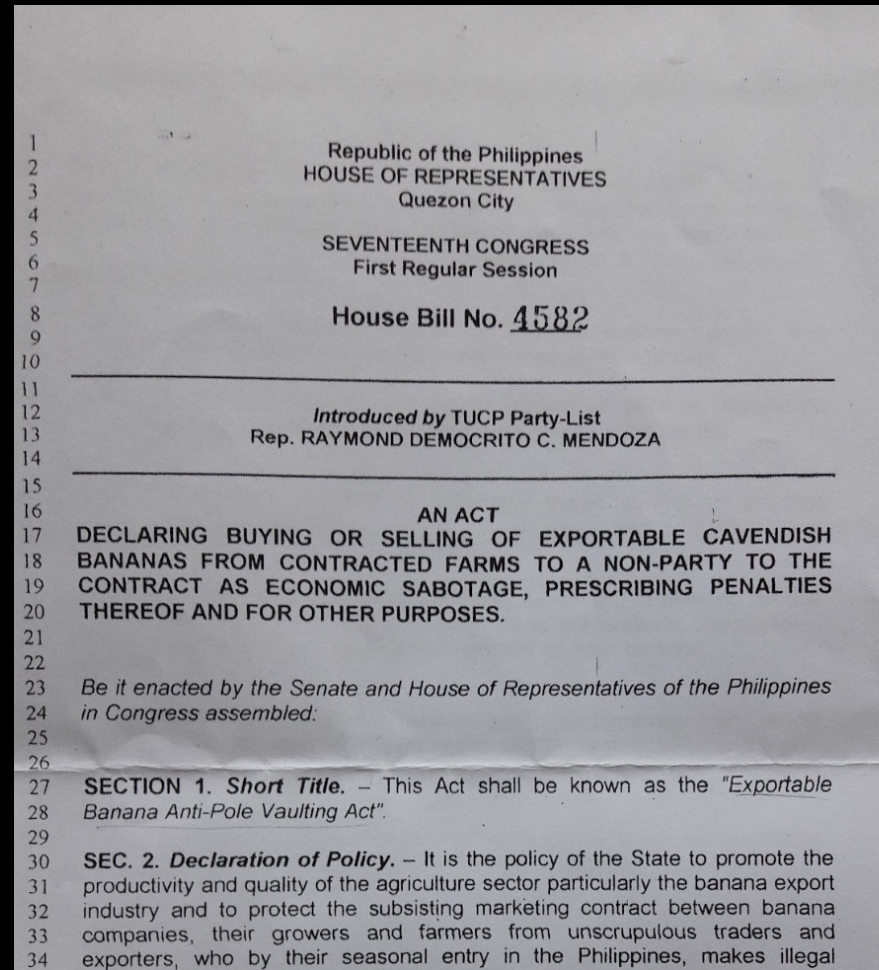
Former contract grower in front of house and packing plant

stop the flying!



Warning at entrance of cooperative contract growers' plantation

stop the flying!



“Anti-Pole Vaulting” legislation in the making

yet...

‘What we pack there, we sell palupad. Every week, often a majority of what we produce’

yet...



Healthy banana plant with 4+ “functional leaves”

yet...



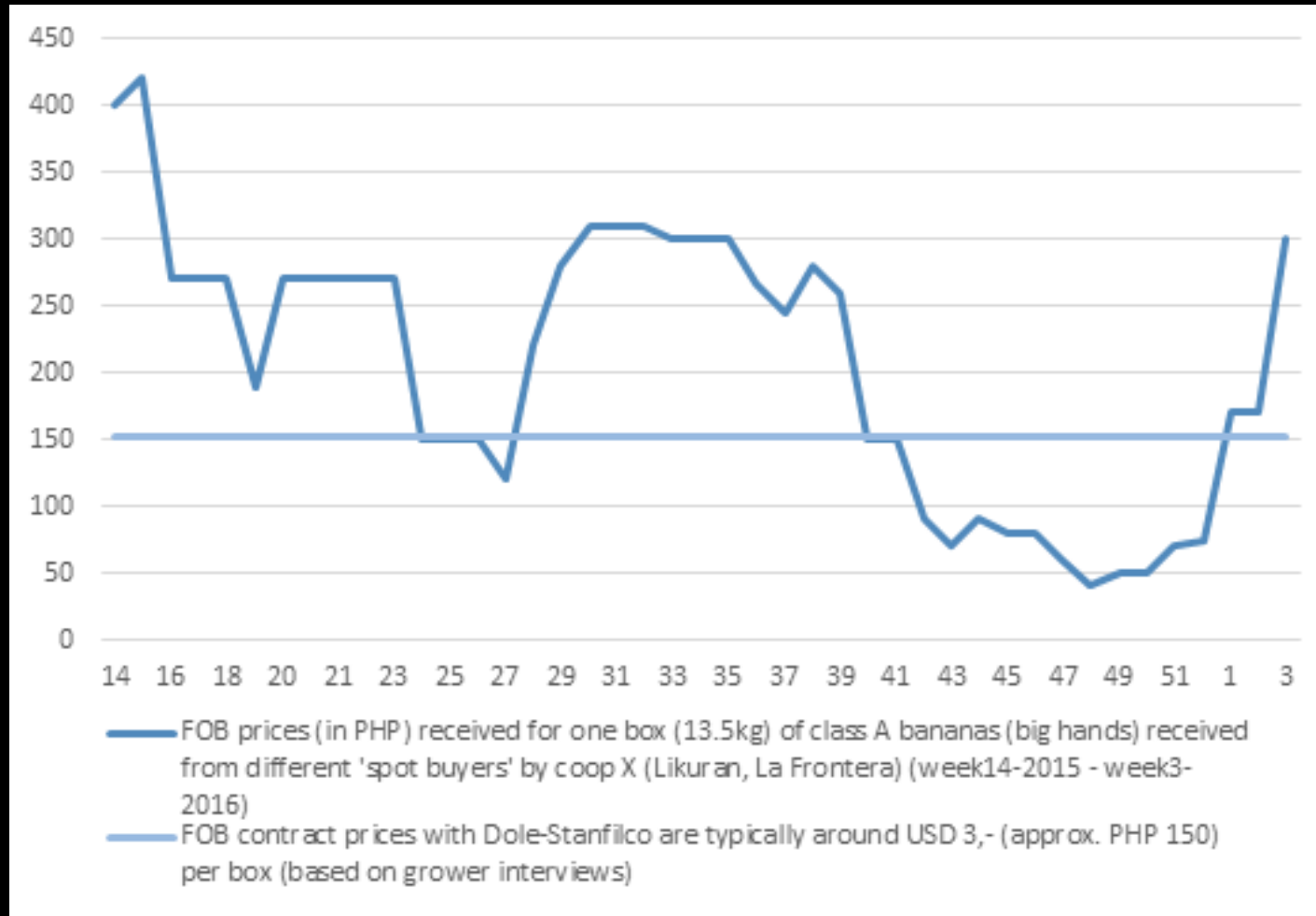
One of many small packing plants

yet...



Growers sell to many different brands and buyers

yet...

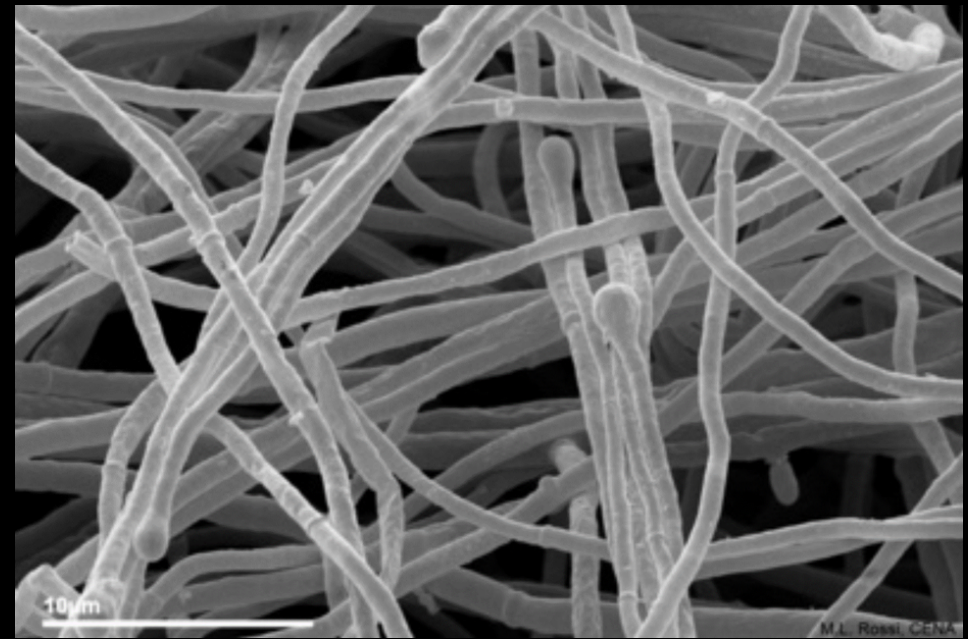


Fluctuating price on the 'spot market' vs 'stable contract price' at coop X (2015-2016)

TALES OF UNLIKELY PROTAGONISTS



flying bananas



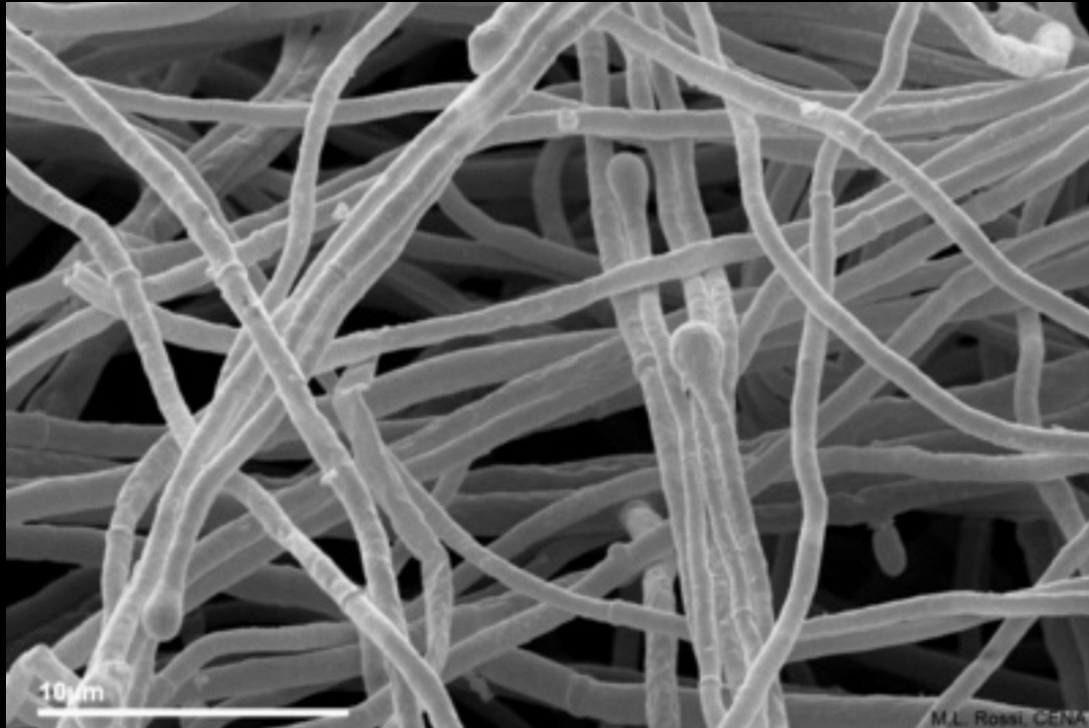
killer fungus

a modern banana



Modern plantation management in the Philippines

a friendly fungus...



Musa acuminata ssp. *malaccensis*



...turns a killer



Fusarium oxysporum f.sp. *cubense* tropical race 4

...and feasts on Cavendish



Banana plant affected by fusarium wilt

fight the fungus!

Department of Agriculture - Region XI
HIGH VALUE CROPS DEVELOPMENT PROGRAM
Package of Assistance for Management and Control of Banana 'Fusarium Wilt'

1. ERADICATION

- Banana farms with five percent (5%) and below Fusarium Wilt (Foc) infection per one (1) hectare area/farm;
- Maximum of One Hundred (100) mats of banana fusarium infected per hectare/farm;
- Proper eradication protocol must be followed;
- Eradication will start upon validation of the plant pathologist;
- Labor for the eradication shall be borne by the grower; and
- Cash for work amounting to Five Hundred Pesos (P500) per mat will be given to farmers as a form of incentive but after the eradication and second validation of plant pathologist assigned in the area.

2. TRICHODERMA DISTRIBUTION

- Banana farms with five percent (5%) and below Foc infection per one (1) hectare area/farm;
- Ten (10) packs of *Trichoderma harzianum*/mat of Foc infected banana will be provided;
- Trichoderma harzianum* must be applied to Foc infected banana mat and to the buffer plants; and
- Maximum of One Thousand (1,000) packs of *Trichoderma harzianum* will be provided to farmers that will qualify for the intervention.

3. DISTRIBUTION OF GCTCV 219

- Maximum of One Thousand Five hundred (1,500) tissue cultured GCTCV 219 seedlings good for one (1) hectare will be provided to:
 - Cavendish banana growers willing to plant GCTCV 219; and
 - Cavendish banana growers with five percent (5%) and above Foc infection in one (1) hectare area/farm.
- Cavendish banana growers that can supply the following:
 - Needed fertilizer requirements;
 - Willing to apply the appropriate technology in management of GCTCV 219;
 - Willing to attend orientation and training on cultural and nutritional management of GCTCV 219.

4. CROP SHIFTING

- Banana farms with five percent (5%) and above Foc infection in one (1) hectare area/farm;
- Abandoned banana farms due to Foc infection; and
- The following planting materials of one kind; good for one (1) hectare will be provided:
 - Cacao - 1,000 seedlings
 - Coffee - 1,000 seedlings
 - Corn - 20 kgs
 - Assorted Vegetables seeds - 700 grams

For more information visit: [www.davaoregion.gov.ph](#)
 Provincial and/or Municipal Office
 You may also call or visit:
 Department of Agriculture - Regional Office XI
 High Value Crops Development Program (DA-HVCDP) - Tel. No. (082) 226-3625 and
 Regional Crop Protection Center (DA-RCPC) - Tel. No. (082) 299-1492

The Package of Assistance is a project of the Department of Agriculture XI High Value Crops Development Program (DA-HVCDP) in cooperation with the Bureau of Plant Industry and the Provincial and Municipal LGUs of Region XI.

Produced by:
 Banana Fusarium Wilt IEC Campaign - Regional Agriculture and Fisheries Information System (RAFIS)
 Department of Agriculture - Region XI



Good practices – quarantine and eradication

thrive with the fungus?



Resistant varieties, rehabilitation and changing land use/control

new (more-than-human) alliances?



Use of endophytes for fusarium management

new (more-than-human) alliances?



Organic farming?

futures?



World Banana Forum 2017 – What to do about fusarium wilt TR4?

IMAGINING
A POST-PLANTATION ?

post-plantation ?

- what?
 - not capitalist alienation, managerial power, and anthropocentric control
 - embracing of more-than-human entanglements, encounters and surprise
 - always “post-plantation” already – no golden formula
- why?
 - what is at play
 - ‘arts of noticing’ (Tsing 2015)
 - grow differently - more cooperative – more engaging
- in practice?

Thank you

Robin Thiers (UGent, Belgium)

robin.thiers@ugent.be

See Thiers, R. (2017, online), 'Flying bananas' in Journal of Peasant Studies